

EASTBOURNE

MARINA GUIDE



PREMIER
EASTBOURNE




- ① EASTBOURNE 01323 470099
- 2. BRIGHTON 01273 819919
- 3. CHICHESTER 01243 512731
- 4. SOUTHSEA 023 9282 2719
- 5. PORT SOLENT 023 9221 0765
- 6. GOSPORT 023 9252 4811
- 7. SWANWICK 01489 884081
- 8. NOSS ON DART 01803 839 087
- 9. FALMOUTH 01326 316620
- 10. HEAD OFFICE 01489 885000



A scenic view of Premier's Sovereign Harbour Marina. In the foreground, several white and dark blue sailboats are moored in the water. The boat on the right has 'AVENTURA' and 'ocean's 40' written on its side. In the background, there are red brick buildings with white window frames. A large blue semi-transparent rectangle is overlaid on the right side of the image, containing white text.

A first-class location, outstanding value and a passion for exceptional service

Welcome to Premier's Sovereign Harbour Marina. We hope that this guide will help you to get the most out of the marina. Dedicated to providing first-class facilities, Premier Marinas' portfolio of leading marinas spans the South Coast. Sovereign Harbour is just one of these prestigious marinas, other locations include Brighton, Chichester, Southsea, Port Solent, Gosport, Swanwick, Noss on Dart and Falmouth.



A world away from the hustle and bustle of modern urban living and a laid-back haven from which to escape life's pressures, Sovereign Harbour is the number one boaters' retreat. Perfect for yachting and motor boat cruising alike, this family friendly, award-winning marina offers first-class facilities and a delightful array of waterfront cafés, restaurants and shops.

Sovereign Harbour

Set on the Sussex coastline, just East of Eastbourne, Sovereign Harbour comprises five harbours that together provide over 800 berths and make up the UK's largest composite marina. The inner basins are entered via one of two 24-hour high capacity locks and along with floating pontoons, these locks make accessing the marina a breeze - even for a novice.

Sovereign Harbour's outstanding facilities have easily earned the marina The Yacht Harbour Association's Five Gold Anchor Award. The marina's location also offers easy cruising along the East Coast to the East Coast ports, and across the Channel to France, Holland or Belgium. Onshore, The Waterfront offers wine bars, restaurants and cafés that overlook the water and add to the relaxed ambience. There is also a

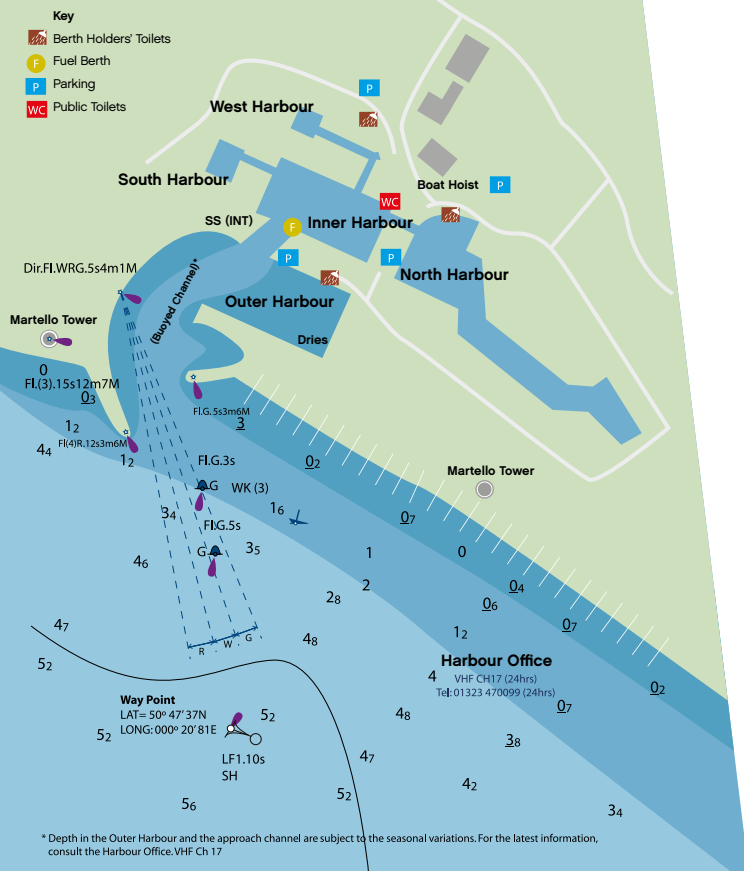
popular onsite yacht club, plus, just moments away, a retail park. Here you'll find an ASDA, high street retailers and a multiplex cinema. But if you'd like more, the Victorian seaside town of Eastbourne is just a seafront promenade away.

Onsite facilities

- Full service boatyard, 50 tonne hoist and storage ashore
- Brokerage
- Self-serve diesel and petrol
- Electricity and water on pontoons
- Facilities and launderettes
- Premier WiFi
- Premier Self Store
- 24-hour security and CCTV
- Dedicated berth holder car parks
- Wine bars, cafés and restaurants
- Calor Gas



Not for navigation



Finding Sovereign Harbour

By road

(Sat nav use BN23 5DD)

From M25 Junction 7:

Follow M23 (S), signposted Brighton, until it becomes the A23. After 15 miles, take the left hand lane A27, signposted Worthing, Lewes and Newhaven. Stay on the A27 East until you reach the Pevensey Roundabout, take the 4th exit A259, signposted Pevensey/Pevensey Bay, here you will pick up the brown and white signs for Eastbourne 'Sovereign Harbour'. At the traffic lights, turn left, cross over the level crossing and continue through Pevensey Bay Village. Then take the first exit off the Martello Roundabout signposted Sovereign Harbour North and follow

signage on Pacific Drive for Harbour Office and RNLI. From M25 Junction 6: Follow A22, signposted East Grinstead/Eastbourne. As you approach the large roundabout near Polegate, turn left on the filter lane, signposted A27 Eastbourne, Bexhill and Hastings, onto the Polegate bypass. Turn right at the Pevensey Roundabout 4th exit, signposted Pevensey/Pevensey Bay A259, where you will pick up the brown and white signs for 'Eastbourne Sovereign Harbour'. At the traffic lights turn left, cross over the level crossing and continue through Pevensey Bay Village. Then take the first exit off the Martello Roundabout signposted Sovereign Harbour North and then



follow signage on Pacific Drive for Harbour Office and RNLI.

From M25 Junction 5: Follow A21, signposted Sevenoaks/Hastings and then turn right onto A2100, signposted Battle/Bexhill. At the roundabout, turn right onto the A271, signposted Bexhill/Eastbourne. At the T-junction turn, right onto the A271/A22, signposted Eastbourne. Turn left at the signpost to Wartling/Pevensey. At the roundabout take the third exit, signposted A259 Eastbourne. At the traffic lights, turn left and continue through Pevensey Bay Village. Next take the first exit off the Martello Roundabout signposted Sovereign Harbour North, then follow

signage on Pacific Drive for Harbour Office and RNLI.

By rail

The nearest main line station is Eastbourne with regular connections to Brighton and London. Tel 08457 484950 for timetable and train information.

By sea

From the East or South-East, remain alert for the tide rips over the Royal Sovereign Shoal, the Horse of Willington and the inshore Coxheath Shoal. From the West, clear the shore by a mile after rounding Beachy Head. The Martello Tower at Langney Point now serves as a Landmark with

a Xenon light (Fl (3).15s12m7M) to indicate the marina. A Safe Water Mark (LFl.10s) at the waypoint Lat 50° 47'.37N Long 000°20'.81E marks the start of the entrance channel (dredged to 2m below chart datum). Upon arrival at the Safe Water Mark, contact the marina on VHF Ch.17. To seaward of the breakwater entrance, the channel is buoyed with two green starboard marks. These two green buoys (Fl.G.3s & Fl.G.5s) mark a World War II wreck, visible at LW Springs. It is important to keep in the white sector of the single point leading light (Dir. Fl.WRG5s4m1M) which leads in on 259° true (261° magnetic 2002). If the leading light is red, turn to starboard

to regain the white sector; if green, turn to port. Pass between the breakwaters marked with lights Fl(4) R12s3m6M (port-hand) and FlG5s3m6M (starboard-hand), coming off the leading line and heading towards the locks once you can clearly see the lock traffic signals. Proceed through the buoyed channel and Outer Harbour (parts of which dry at low water), observing the speed limit of 5 knots. Mariners should always monitor VHF Ch.17 for navigation information whilst underway within the harbour. A 3 knot limit applies around the Waterfront and the North Channel.



Light sequence

- Flashing red light**
Vessels should not proceed.
Vessels inbound to the lock should heave to or give way to outbound vessels
- Green lights**
Vessels may proceed
- Green/white/green**
Caution - vessels may proceed only when specific instructions to do so are received



Locking procedure

Locking procedures

- Upon entering the tidal outer harbour, the marina's purpose-built twin 50m locks will be clearly visible
- The two locks are in operation 24 hours a day, closing on the hour and half-hour
- Monitor VHF Ch.17 for broadcasts about the status of the locks at all times
- Always follow the lock traffic signals and obey instructions from the lock keeper and lock packer

Light sequence

- Red – vessels must not proceed
- Vessels inbound to the lock should heave to or give way to outward bound vessels
- Green – vessels may enter the lock
- Green/white/green - caution vessels may proceed only when specific instructions to do so have been received

Lock rules and regulations

- Obey the directions of the lock keeper and lock packer, who

will be next to the lock

- Approach the locks with fenders rigged on both sides of your vessel and mooring lines ready
- Always move as far forward in the lock as possible and when secure, switch off your engines and radar
- Help others coming alongside after you
- We recommend springs are used where possible
- A lock keeper will greet you, take basic details of your vessel and allocate a suitable berth

Once you are secured in your berth, please call into the Marina Reception to register

- The inner marina basins need occasional 'top-ups' which we do during high tide. At this time, we operate a single lock
- Do not use lock ladders except in an emergency







Sovereign Harbour Marina's
full postal address is
Sovereign Harbour,
Marina Office,
North Lock Side,
Pacific Drive,
Eastbourne
BN23 5BJ
(Sat nav use BN23 5DD)

www.premiermarinas.com



Sovereign Harbour useful information

Marina Reception

The Marina Reception is open 24 hours a day. You can contact the Reception on VHF Ch.17, telephone 01323 470099 or call in to the Marina Reception at any time.

24-Hour security

CCTV cameras cover berths, car parks, bridgeheads, and the shoreside. Each pontoon bridgehead has an access control system activated by a fob key.

Notices to mariners

Notices issued by the harbour master are displayed in the Marina Reception and on our website.

Weather forecasts

Weather forecasts are available from the Marina Reception, facility blocks and on our website.

Lock access

The lock allows 24-hour access every day.

Fuel bay and gas

The self-service fuel bay is open 08.00 - 20.00 daily and sells diesel and unleaded petrol. Gas is available from the Marina Reception - please bring along your empty cylinder.

Pump-out facilities

Holding tank pump-out facilities are available on the fuel bay - please contact the Marina Reception for service.

Electricity

If you require electricity during your stay, please contact the Marina Reception.

Premier WiFi

Enjoy broadband speed WiFi via hotspots located throughout the marina, provided free of charge for three devices at a time. Please visit the Marina Reception for login details.

Launderettes


There are two launderettes in the marina and both are open 24 hours a day. The launderettes are located in the inner and north harbour facilities buildings. There are coin operated washing and drying machines (£1 coins and 20p for dryers). Entry can be gained by using your fob key.

Refuse and recycling

Premier has full recycling facilities onsite. Recyclables, such as cans, plastic, paper and cardboard should

be disposed of in the Dry Mixed Recycling bins. Bins for glass are also provided and food/general waste can be disposed of in the bins marked General Waste. Waste disposal areas are situated in the North Harbour at gates 1, 15, 17, Inner Harbour at gates 11 and 12 and at each bridgehead in West Harbour. For the disposal of waste oil, please contact Marina Reception.





Sovereign Harbour is the perfect escape from life's pressures – unwind at the Waterfront with its boutiques, restaurants and cafés, shop 'till you drop' in the retail park or take in a movie at the cinema. A short walk away, the Victorian town of Eastbourne offers traditional seaside attractions, museums and The Congress Theatre. Pevensey Castle is also nearby and is famously the landing place of William the Conqueror's army in 1066. Further afield, there are exceptional countryside walks on the South Downs, now a designated National Park.

Places to visit and things to do

Places to visit

Beachy Head
08716 630 031

Eastbourne Pier
01323 410 466

Heritage Centre
Museum
01323 411 189

Lifeboat Museum
01323 730 717

Pevensey Castle
01323 762 604

Redoubt Fortress,
Military Museum
01323 410 300

Things to do

Sovereign Harbour
Berth Holders'

Association
*Formed in 1999 and
affiliated to the RYA, the
association offers a wide
range of activities including
training and social*

*events. Find out more
at www.shbha.co.uk
or email
committee@shbha.co.uk.*

Sovereign Harbour
Yacht Club
01323 470 888

Miniature Steam
Railway
01323 520 229

Bandstand
Concerts
01323 410 611

Sovereign Centre
Swimming Pool
01323 738 822

Little Cophall
Riding Stables
01323 483 975

Congress Theatre
01323 412 000

Dotto Train - Seafront
03456 002 299

Downs Golf Course
01323 720 827



Safety in Sovereign Harbour Marina

General safety in the marina

- First aid is available from the Marina Reception - usually 24 hours a day.
- A defibrillator is situated outside the Marina Reception.
- Familiarise yourself with the locations of the pontoon safety boxes. These boxes house fire extinguishers, throw lines, thermal blankets and first aid kits.
- Report all accidents and potential hazards to the Marina Reception immediately.
- Keep the pontoons clear of materials, tenders etc.
- Do not allow your anchor/davits to overhang walkways.
- Note the location of fire assembly points - see marina site map in this guide. Where applicable, note Water Evacuation points.
- Do not ride, or allow children to ride in the marina trolleys.
- In wet or icy weather, watch out for slippery pontoons.
- The boatyard has large equipment moving around. Please keep clear of vessels and machinery involved in lifting operations.
- Ensure that you use the correct size and quantity of mooring lines for your boat.
- Follow the safety instructions on your electricity supply pod before connecting your boat to the supply.

In the event of an emergency dial 999 then call the Marina Reception on VHF Ch. 17 or dial 01323 470 099. For your general safety in the marina and for advice on fire safety in the marina – please read opposite.

Water safety advice

- Whilst adjacent to water, life jackets should be worn at all times in accordance with RNLI <https://rnli.org/safety/respect-the-water> and RoSPA <https://www.rospace.com/leisure-safety/water/guidelines>.
- Children should wear life jackets and be supervised at all times when near the water.
- Wear a life jacket or 'clip on' when on the upper deck of your boat, particularly when alone.
- When berthed in the marina, drop your boarding ladder to allow easy access back onto your boat in the event of a fall into the marina.
- Take note of nearby boats that could provide a means of exit

should you fall into the marina.


- Take note of where the marina safety ladders are in proximity to your boat - see marina site map in this guide.
- Use rescue equipment only in the event of an emergency and advise the Reception if you use any of the equipment. Misuse of this equipment may have life-threatening ramifications for future users.

Advice on fire safety in the marina

- At the Fuel Jetty: No smoking. Turn off mobile phones, VHF radios, engines and cooking appliances. Extinguish naked flames. Follow instructions given by our trained members of staff.
- Do not use BBQs on boats, jetties or pontoons.
- Keep minimum stores of petrol, diesel and gas.
- Install a smoke alarm and test it regularly.
- Ensure gas installations are in a sound condition and checked regularly by a qualified registered contractor.
- Make sure your gas bottle (LPG) is secured and kept away from heat sources.
- Check that your fire extinguishers and fire blanket are serviceable.
- Always isolate fuel and gas on leaving your vessel.
- Check electrical heaters, dehumidifiers and 240v equipment on leaving your vessel.

In the event of an emergency

- Do not try to tackle the incident yourself - unless you are appropriately trained for the incident at hand and it is safe to do so.
- In the event of an evacuation, leave immediately and head for the nearest fire assembly point - see marina site map in this guide. If the route is blocked, make your way to the nearest Water Evacuation Point.
- Follow instructions given by marina staff, security and the emergency services.
- Alert neighbouring vessels.
- Do not waste time collecting personal items.

A man with short hair and a beard, wearing a dark blue t-shirt, is focused on his work. He is using a green and black power tool with a yellow star-shaped attachment to work on the white hull of a boat. The background is a clear blue sky. A semi-transparent blue box with white text is overlaid on the right side of the image.

With one of the best lifting and boatyard facilities on the South Coast, an experienced yard team and a host of marine tenants on hand, Sovereign Harbour's boatyard is the perfect place to carry out routine boat maintenance, or to make a running repair.

To find out more, or to make a boatyard booking, call the Marina Reception on 01323 470099 or email: eastbourne@premiermarinas.com. Alternatively, go online for a boatyard quote at premiermarinas.com.

Premier's boatyard and other marine services

Premier's boatyard services

Premier's Sovereign Harbour Marina offers a quality boatyard service that includes the use of an Italian Ascome travel lift that is capable of lifting up to 50 tonnes with a maximum beam of 5.7m. This machine also supports a 1.5 tonne

crane, that's ideal for engine lifts or stepping masts. Alongside the travel lift, the marina benefits from a new towing tractor; a 20 tonne boat mover and a specialist marine forklift truck.

The boatyard with its highly experienced team operates

throughout the year providing lifting services that include high-pressure wash hull cleaning, mast removal/stepping and engine lifts. In addition to complimentary storage ashore, Premier Berth Holders enjoy a 15% discount on Premier boatyard services and seasonal offers that offer great value for money.



Onsite and local marine services

Alongside Premier's boatyard, Sovereign Harbour offers a good mix of dedicated onsite tenants and local contractors. Together, these companies cover all aspects of boat care and provide a comprehensive range of maintenance and repair services - including engineering and fabrication, rigging and shipwright services, GRP repairs, cosmetic work and RYA training.

If you cannot see the services you need here, please do not hesitate to ask for assistance at the Marina Reception.

MARINE ENGINEERING AND MAINTENANCE

Tim Nicholls Yacht Services Limited
01323 478 080
www.tnyachtservices.co.uk

This company offers GRP repairs and modification, annual maintenance, antifouling, services, fitting and installation, electrical, stern gear repairs, pre-sales and after sales work, GRP machine polishing and valeting. Established over 10 years at Sovereign Harbour, Tim Nicholls is happy to provide a no-obligation quotation for all maintenance and repair works.

Tate Marine
07788 241 399
james@tatemarine.com

BOAT COVERS AND SAIL REPAIRS

Nickys Canvasworks
07831 236 651
01273 690 696
sales@nickyscanvasworks.com
www.nickyscanvasworks.com

Specialising in manufacturing and repairing all things fabric on your boat including covers, upholstery, mattresses, carpets and curtains, with a re-stitching, repair and new window service. We have a fully equipped workshop in Brighton Marina.

Nickys Sail Clinic and Loft
07780 490 630
01273 690 696
sales@nickyscanvasworks.com

All sail repairs from a running repair to a major rebuild. UV strips replaced, re-stitching, sail numbers, tell tails and much more, we also offer an emergency overnight repair service to berth holders and visitors. Large sail storage locker available, with full sail cleaning and management, main dealers for both Elvstrom and Jeckells

new sails with a varied changing stock of good second-hand sails. Collection/ delivery unit in Eastbourne.

CHANDLERY

Tim Nicholls Yacht Services Ltd Chandlery
01323 478 080
www.tnyachtservices.co.uk

Tim Nicholls Yacht Services Ltd's chandlery shop stocks a wide range of essential maintenance and DIY Yachting supplies including a well-stocked rope rack, parts and accessories.

NAVIGATION & AUDIO EQUIPMENT

Eurotek Marine
01323 479 144

Other marine services

TRAINING
Sea Training Sussex
07713 639 066

USED AND NEW BOAT SALES

Bates Wharf Yacht Brokerage
01323 470 066

Ancasta
01273 673 232

YACHT/ANGLING/POWERBOAT CHARTER

Aladard - Charter Vessel
01424 212 602

Harbour Tours
07790 077 019

Katrina - Charter Vessel
01323 766 076

Panther Charter Vessel
07970 899 823

To find out more,
or to make a boatyard
booking, call the
Marina Reception on
01323 470099
or email:
eastbourne@premiermarinas.com.
Alternatively, go online
for a boatyard quote
at premiermarinas.com

Your local experts in sails and
marine canvaswork covers



Sail Loft

- All repairs carried out by experienced sailmakers in our loft
- Condition reports & advice together with free winter storage
- Sail removal & refitting service
- Main dealers for new Jeckells & Elvstrom sails



Covers

- All types of cover repair workshop from window replacement and new zips to re stitching etc.
- Cover & sail valeting service



Chandlery

- Well stocked for all your essential boating needs
- Fast order in service, internet competitive pricing wherever possible
- Lifejacket & Liferaft Service Centre
- Splicing of multi braids including Dynema & great prices on running ropeworks

End of season service, report, repair, clean and storage

Dedicated secure store at Sovereign Marina giving collection
& delivery convenience for berth holders

Covers 07831 236 651 . Sails 07880 490 630 . Chandlery 01273 690 696
Unit 1A, East Lockside, The Boatyard, Brighton Marina, Brighton BN2 5UG
sales@nickyscanvasworks.com www.nickyscanvasworks.com



Tried, tested and trusted

Boat owners around the world use us for their transportation because we have proved time and again that we take pride in getting the job done, on time and at the right price. No job is too big or too small, contact us for a moving experience!

For sailing dates and
service details visit
www.psp-logistics.com



Exclusive UK booking agent for Starclass Yacht Transport
from Poole and Southampton to European ports

PROJECTS | FREIGHT | PACKING | MARINE | EXPRESS | MARINE SPARES



BERTH HOLDERS
SAVE 10%

NEW MARINERS' SELF STORE NORTH LOCKSIDE, SOVEREIGN HARBOUR

New purpose-built self store, ideal for storing boating equipment. Room-sized units range from 10 to 150 square feet - with an option to upsize or downsize.

- Secure Storage • Low Cost Agreements • Berth Holders Save 10% • Units 10-150 FT²
- 24-Hour Security • Unlimited Access • Dedicated Parking



TO VIEW OR BOOK CALL: 01489 66 00 22 www.premierselfstore.com

FORREST & STEVENS

YACHT RIGGING, FABRICATION & HEATING

RIGGING

Forest & Stevens is all about going the extra mile to supply the right rigging equipment first time, every time at competitive prices.

• New Masts and Spars • Running Rigging • Spinnaker Poles • Furling Systems • Standing Rigging • Booms • Rod Kickers • Gennaker Poles • Carbon Spars • Mobile Workshop.



FABRICATION

Our expert marine engineer Bob Forrest specialises in the design, fabrication and repair of stainless steel marine and architectural components, engineering and Eberspacher heating.

• Bow Rollers • Push & Pulpits • Fuel & Water Tanks • Shafts • Shaped rails • Brackets & Plates • Bearings • Engine Components • Wind Generator Poles • Solar Panel Gentries • Eberspacher Heating System Sales, Installation, Service & Repairs.



For Rigging Call Mike on 07568 065310 | For Engineering Call Bob on 07881 020245 | email: info@forrestandstevens.co.uk

www.forrestandstevens.co.uk

Mike Stevens Yacht Rigging, Marine Trade Centre, Brighton Marina, Brighton BN2 5UF

SPECIALIST MARINE INSURANCE AND EXCLUSIVE BERTH HOLDER BENEFITS

Premier Marine Insurance has teamed with leading
marine insurance provider GJW Direct to offer
Premier berth holders specialist cover
and exclusive benefits

- Personal contact with specialist underwriters and claims handlers
- Protected no claims bonus and no excess to pay for accidents in Premier marinas - afloat or ashore
- Extended cruising range to Eire, Western France and most of mainland Europe
- Berthing fees paid whilst your boat is repaired ashore after a claim

For more details visit the Marina Reception. For a quote call 0151 473 8073 or visit www.premiermarineinsurance.co.uk



Premier Marine Insurance is a trading name of Premier Marinas Limited an Introducer Appointed Representative of GJW Direct. GJW Direct is a trading name of Groves, John and Westrup Ltd a general insurer authorised and regulated by the Financial Conduct Authority register number 310496. GJW Direct is a subsidiary of Munich Re Holding Company (UK) Limited.

GJW*Direct*

YOUR ONE STOP SHOP FOR ALL YOUR BOATING REQUIREMENTS

SERVICES:

- Engine Servicing & Repairs
- Electrics
- Plumbing
- New Engine Installations
- Health Checks
- Antifouling & Valeting
- Winterisation

PARTS:

- Mercury Outboards
- Anodes & Antifoul
- Oil & Lubricants
- Outboard Service Kits
- Outdrive Spares
- ...and much more!

OUR SPECIALISMS:

- On-going Support & Parts
- Volvo & MerCruiser Engines
- Free Consultations
- Experienced & Helpful Staff
- Exceptional Customer Care
- Serving the Marine Industry for over 25 years



Find us at Brighton Marina:

Unit 6, Marine Trade Centre
Brighton Marina, Brighton, BN2 5UG

01273 626656

info@mickwestmarine.com

APPOINTED DEALERSHIP IN SUSSEX FOR:

**VOLVO
PENTA**



MERCURY YANMAR



Open 6 Days a Week

Visit our website for more details...

www.mickwestmarine.com



PRINCESS MOTOR YACHT SALES

YEAR ROUND ACCESS TO A COMPREHENSIVE YACHT SERVICE

With more than 40 engineers across our network and industry leading response times, we offer the most comprehensive range of yacht services available anywhere.

- Engine servicing and repairs
- Generator servicing and repairs
- Air-conditioning
- Battery servicing and replacement
- Fuel treatment
- Anti-fouling
- Gel coat repairs and polishing
- Carpentry
- Yacht customisation and enhancement



Model featured is a Princess S60

www.princess.co.uk/aftercare
Our Knowledge is Your Luxury

Contact us on +44 (0)2381 103170
or email service@princess.co.uk



LUXURY REFINEMENT. SPORTING PRECISION. THE STUNNING PREDATOR 57.

Sunseeker Southampton | +44 (0) 1489 579 824 Mobile: +44 (0) 7747 686587
info@sunseekersouthampton.com | www.sunseekersouthampton.com
20 Models of Luxury motor yachts from 48ft to 155ft

NEW BOAT SALES & BROKERAGE
Looking to sell your boat, please
contact us for a valuation


Sunseeker®
Southampton

51.536°N 0.9029°W
ANCHOR

CLEANTOGLEAM

— MARINE —

One off Cleans ↓ Monthly Cleans ↓ Machine Compound & Polishing ↓ Interior Cleaning



Hull Cleaning ↓ Limescale Removal ↓ Machine Compound & Polishing
with a Free Hard Wax Applied

See our full range of professional cleaning products
and all our monthly offers at www.cleantogleam.com

Terms & conditions apply

0845 0521 222



Marine Engineering

Engine Servicing
Engine Repair
Fault Finding

Outdrive Servicing
Stern Gear
General Maintenance



www.marineservicing.co.uk
Tel: 07932 318414
info@marineservicing.co.uk



MARINE ELECTRONICS

RAYMARINE
GARMIN
SIMRAD
B&G
LOWRANCE

**THE ONLY MARINE ELECTRICAL AND ELECTRONICS
SPECIALISTS IN SOVEREIGN HARBOUR**
**WE HAVE A SHOWROOM AND SERVICE SHOP
RIGHT HERE NEXT TO THE MARINA BOAT YARD**

+44 (0) 1323 479144

Out of hours +44 (0) 9802 856015

M: sales@eurotekmarine.co.uk

W: www.eurotekmarine.co.uk

We are your one stop for electrical & electronics

SALES - SERVICE - INSTALLATIONS - SPARES

**We service all makes of electronics & offer warranty service
for all the major manufacturers in our workshop on site.**

OUR OTHER SERVICES INCLUDE

Batteries
Battery chargers
Inverters
Cables
Battery cables
Switch panels
Fuses
Circuit breakers

Navigation
Radar & AIS
Communications
Instrumentation
Autopilots
Satellite TV
Satellite Comms
Stereo and TV

Bilge pumps
Water pumps
Float switches
TV antennas
VHF antennas
Lighting
Battery monitoring
Spotlights

WELCOME *to* BATES WHARF

The Bates Wharf Way: offering a personal service from the very beginning whether you are buying, selling or maintaining your boat.



SHOWROOM LOCATIONS

London KT16 8LG

T: 01932 571141



Eastbourne BN23 5QF

T: 01323 470066

Poole BH15 4AF

T: 01202 679421

Southampton SO31 7EB

T: 01489 576888

www.bateswharf.co.uk



BAYLINER®



Chris + Craft



COOPER
DESIGN & BUILDING





- Professional and hassle free service ✓
- European office network ✓
- Competitive commission ✓
- Clear communication ✓
- Best market price ✓
- Storage offers ✓
- Quick results ✓

New Boat
Dealers For:



60,000 visits
on-line
per month

Drawing from over 30 years of unrivalled brokerage experience and successfully negotiating the annual sales of over 700 new and used boats a year, Ancasta are the preferred choice for people who want to take advantage of our uncompromised professionalism and energetic approach.

Your local office is in Brighton Marina, Brighton. Servicing the Eastbourne area.

For sat' nav' please use
post code BN2 5WA.

Call +44(0)1273 673 232 or visit www.ancasta.com

