



**Robinsons  
Coach Travel**  
*"The civilized way to travel"*

**COPPICE ROAD, BROWNHILLS, WALSALL, WEST MIDLANDS WS8 7DG**

Telephone: 01543 372247 Email: [info@robinsonstravels.com](mailto:info@robinsonstravels.com) [www.robinsonscotchtravel.co.uk](http://www.robinsonscotchtravel.co.uk)

## DAY TRIPS – MARCH, APRIL & MAY 2019

### MARCH

|  |   | Senior/Adults | Child (3-12) |
|--|---|---------------|--------------|
| <b>Monday 25<sup>th</sup></b>  | <b>BAKEWELL MARKET &amp; MATLOCK BATH</b>             | £16.00        | £12.00       |
| Off to Bakewell for the Monday market in centre of town, followed by the afternoon in Matlock Bath set in the stunning gorge of the river Derwent. |   |               |              |
| <b>Thursday 28<sup>th</sup></b>  | <b>STRATFORD-UPON-AVON</b>                            | £16.00        | £12.00       |
| Most famous for being the birthplace of William Shakespeare, Stratford-Upon-Avon is steeped in charm & history,                                    |   |               |              |
| <b>Sunday 31<sup>st</sup></b>  | <b>LUDLOW &amp; BRIDGNORTH – Mother's Day Special</b> | £14.00        | £10.00       |
| First to Ludlow for the Mother's Day Sunday Market before travelling to Bridgnorth with its famous funicular cliff railway.                        |   |               |              |

### APRIL

|   |  | Senior/Adults | Child (3-12) |
|---|--|---------------|--------------|
| <b>Tuesday 2<sup>nd</sup></b>   | <b>COTSWOLDS</b>                                   | £16.00        | £12.00       |
| A popular day out – first we are off for a visit to Moreton-in-Marsh on market day then back on the coach to enjoy the afternoon in Bourton-on-the-Water.   |  |               |              |
| <b>Monday 8<sup>th</sup></b>  | <b>NATIONAL MEMORIAL ARBORETUM &amp; CREAM TEA</b> | £24.00        | £20.00       |
| The UK's year-round centre of Remembrance. 150 acres of beautiful woodland & gardens, exhibitions and over 300 unique memorials to see. Included in the price is a cream tea with freshly baked scones, jam & clotted cream for you to enjoy in the Arboretum restaurant. |  |               |              |
| <b>Wednesday 10<sup>th</sup></b>  | <b>TEWKESBURY MARKET &amp; WORCESTER</b>           | £16.00        | £12.00       |
| Discover Tewkesbury & browse the open air market. The afternoon is free in Worcester, with the beautiful Cathedral & shops to explore.  |  |               |              |
| <b>Tuesday 16<sup>th</sup></b>  | <b>ELY &amp; CAMBRIDGE</b>                         | £20.00        | £16.00       |
| A morning in Ely, home to one of England's largest Cathedrals. Then to Cambridge to be inspired by the many museums, art galleries, college buildings, architecture, independent & high street shops.   |  |               |              |
| <b>Thursday 18<sup>th</sup></b>   | <b>CHESTER / CHESTER ZOO / CHESHIRE OAKS</b>       | £16.00        | £12.00       |
| Take your pick - Chester, Chester Zoo (admission not included) or Cheshire Oaks. Same coach – just let us know which one you want to go to when booking.  |  |               |              |
| <b>Tuesday 23<sup>rd</sup></b>  | <b>TRENTHAM GARDENS</b>                            | £24.00        | £20.00       |
| Trentham Gardens has plenty to offer, price includes entry to the glorious Italian and Show Gardens, Lakeside Walk, shopping village, garden centre and eateries. If you fancy a walk amongst the monkeys why not visit the Monkey Forest (admission not included).       |  |               |              |
| <b>Tuesday 30<sup>th</sup></b>  | <b>LLANGOLLEN &amp; LLANDUDNO</b>                  | £21.00        | £17.00       |
| Enjoy the scenic landscape as we arrive in Llangollen for a short stay before re-joining our coach to the popular seaside resort of Llandudno.  |  |               |              |

### SUNDAY 5<sup>th</sup> MAY EMMERDALE STUDIO TOUR EXPERIENCE £43.00 per person

Price includes admission to Studio Tour & Coach Travel

£10.00 non-refundable deposit per person secures your booking

The Emmerdale Studio Experience is now open at the former ITV studios in Leeds. The fully guided tour shows your favourite characters and stories are brought to life. You'll get to see full scale set reconstructions, props, and costumes. Learn the secrets behind stunts and special effects of this iconic programme. You'll also have the opportunity to take your memories home with a souvenir photo from behind the Woolpack bar to buy or exclusive Emmerdale merchandise from the gift shop.

LIMITED AVAILABILITY – EARLY BOOKING ADVISED.

### MAY

|   |                                     | Senior/Adults | Child (3-12) |
|---|-------------------------------------|---------------|--------------|
| <b>Monday 6<sup>th</sup></b>  | <b>LLANDUDNO VICTORIAN FESTIVAL</b> | £21.00        | £17.00       |
| Bank Holiday Monday in Llandudno as it plays host to their annual Victorian Extravaganza. Something for all the family to enjoy.                            |                                     |               |              |
| <b>Thursday 9<sup>th</sup></b>  | <b>BATH</b>                         | £20.00        | £16.00       |
| Discover Bath with stunning architecture, beautiful Abbey, parks, gardens and famous Spa Baths  |                                     |               |              |
| <b>Tuesday 14<sup>th</sup></b>  | <b>THE LAKE DISTRICT</b>            | £24.00        | £20.00       |
| Enjoy the beautiful views of the Lake District as we start our day in Ambleside with time to explore the shops before we head off to Bowness-on-Windermere. |                                     |               |              |
| <b>Thursday 16<sup>th</sup></b>   | <b>STRATFORD-UPON-AVON</b>          | £16.00        | £12.00       |
| Most famous for being the birthplace of William Shakespeare, Stratford-Upon-Avon is steeped in charm & history,   |                                     |               |              |
| <b>Sunday 19<sup>th</sup></b>   | <b>LIVERPOOL</b>                    | £19.00        | £15.00       |
| Famous for the home of The Beatles enjoy a day out in Liverpool with Albert Dock, shops, museums and galleries to explore.                                  |                                     |               |              |
| <b>Sunday 26<sup>th</sup></b>   | <b>WHITBY</b>                       | £24.00        | £20.00       |
| Whitby is one of the best loved seaside resorts. From blue flag beaches, the cobbled streets to the working harbour there's lots for everyone to enjoy.     |                                     |               |              |
| <b>Tuesday 28<sup>th</sup></b>  | <b>WESTON-SUPER-MARE</b>            | £21.00        | £17.00       |
| With Victorian & Edwardian terraces, colourful parks, long sandy beaches and famous Grand Pier, Weston-Super-Mare has plenty for all ages.                  |                                     |               |              |
| <b>Thursday 30<sup>th</sup></b>   | <b>SKEGNESS</b>                     | £22.00        | £18.00       |
| Enjoy time on the sandy beaches that stretch for miles and plenty of attractions for a great family day out at the seaside.                                 |                                     |               |              |

**BOOKINGS TAKEN FROM 10.00am TO 4.00pm - MONDAY TO FRIDAY**

**TELEPHONE 01543 372247 or visit us at our Brownhills Office**



Popular local pickups : Brownhills, Shelfield, Aldridge, Pelsall, Walsall, Lichfield, Cannock, Bloxwich, Heath Hayes, Willenhall & many more.





**Robinsons  
Coach Travel**  
*"The civilized way to travel"*

**COPPICE ROAD, BROWNHILLS, WALSALL, WEST MIDLANDS WS8 7DG**

Telephone: 01543 372247 Email: [info@robinsonstravels.com](mailto:info@robinsonstravels.com) [www.robinsonscorchtravel.co.uk](http://www.robinsonscorchtravel.co.uk)

## DAY TRIPS – JUNE & JULY 2019

| <b>JUNE</b>  |   | <b>Senior/Adults</b> | <b>Child (3-12)</b> |
|--|---|----------------------|---------------------|
| <b>Sunday 2<sup>nd</sup></b>   | <b>MORECAMBE</b>  | £22.00               | £18.00              |
| Stroll along Morecambe's award winning promenade & the Eric Morecambe Statue, visit the gift shops or head on down to the beach for the day.   |   |                      |                     |
| <b>Thursday 6<sup>th</sup></b>   | <b>THE LAKE DISTRICT</b>                                | £24.00               | £20.00              |
| Time to explore the shops in Kendal and perhaps a bite to eat before we head off to Bowness-on-Windermere for the afternoon.   |   |                      |                     |
| <b>Tuesday 11<sup>th</sup></b>   | <b>MATLOCK BATH &amp; MASSON MILLS SHOPPING VILLAGE</b> | £16.00               | £12.00              |
| A morning to enjoy Matlock Bath with riverside gardens & cable car ride up to The Heights of Abraham.. Spend the rest of the day at Masson Mills Shopping Village with sixty different retail concepts set over five floors, all under one roof.                           |   |                      |                     |
| <b>Thursday 13<sup>th</sup></b>  | <b>YORK</b>   | £22.00               | £18.00              |
| Take a stroll along the shops in the Shambles, visit York Minster or if you prefer spend the day at the National Railway Museum, there's plenty to see and do.   |   |                      |                     |
| <b>Monday 17<sup>th</sup></b>  | <b>BAKEWELL MARKET &amp; BUXTON</b>                     | £16.00               | £12.00              |
| Bakewell first for the Monday market before heading off to the Spa town of Buxton, with its stunning ornamental gardens, Georgian and Victorian architecture.  |   |                      |                     |
| <b>Saturday 22<sup>nd</sup></b>  | <b>WESTON-SUPER-MARE AIR FESTIVAL</b>                   | £21.00               | £17.00              |
| The 2019 Weston Air Festival takes place this weekend on the Weston-Super-Mare Seafront and Beach Lawns. The free event is a mix of spectacular aerobatic displays and armed forces celebrations. There will be trade stands and activities to entertain the whole family. |   |                      |                     |
| <b>Tuesday 25<sup>th</sup></b>   | <b>LLANDUDNO</b>  | £21.00               | £17.00              |
| Take a stroll along the promenade, visit the pier or have a sit on the beach. Plenty to see and do at this popular seaside resort.   |   |                      |                     |

**SUNDAY 23<sup>rd</sup> JUNE CORONATION STREET STUDIO TOUR £56.00 per person**  
*Price includes admission to Studio Tour & Coach Travel £10.00 non-refundable deposit per person secures your booking*

Coronation Street has opened its doors to its newly created set located at Media City Salford Quays. Wander through Rosamund & Victoria Street, Weatherfield on a fully guided tour of the working set. Recall stories from yesteryear, hear filming secrets, take selfies on the cobbles and follow in the footsteps of your favourite characters. Free time in Salford Quays before our afternoon tour.  
**LIMITED AVAILABILITY – EARLY BOOKING ADVISED.**

| <b>JULY</b>  |  | <b>Senior/Adults</b> | <b>Child (3-12)</b> |
|--|--|----------------------|---------------------|
| <b>Tuesday 2<sup>nd</sup></b>  | <b>COTSWOLDS</b>                             | £16.00               | £12.00              |
| A popular day out – first we are off for a visit to Moreton-in-Marsh on market day, spending the afternoon in the beautiful Cotswolds village of Broadway.         |  |                      |                     |
| <b>Sunday 7<sup>th</sup></b>   | <b>SKEGNESS</b>                              | £22.00               | £18.00              |
| With miles of sandy beaches and plenty of attractions for all ages, giving a great day out for all.  |  |                      |                     |
| <b>Sunday 14<sup>th</sup></b>  | <b>WESTON-SUPER-MARE</b>                     | £21.00               | £17.00              |
| With Victorian & Edwardian terraces, colourful parks, long sandy beaches and famous Grand Pier, Weston-Super-Mare has plenty for all ages to enjoy.                |  |                      |                     |
| <b>Wednesday 17<sup>th</sup></b>   | <b>TEWKESBURY MARKET &amp; WORCESTER</b>     | £16.00               | £12.00              |
| Discover Tewkesbury & browse the open air market. The afternoon is free in Worcester, with the beautiful Cathedral & shops to explore.                             |  |                      |                     |
| <b>Saturday 20<sup>th</sup></b>  | <b>WHITBY</b>                                | £24.00               | £20.00              |
| With Blue Flag beaches and some of the best fish & chips around, cobbled streets & working harbour Whitby is one of the best loved seaside resorts.                |  |                      |                     |
| <b>Tuesday 23<sup>rd</sup></b>   | <b>BLACKPOOL</b>                             | £21.00               | £17.00              |
| With the Promenade, beach, Tower, trams, amusements & Pleasure Beach you'll find lots to do at this popular family resort.   |  |                      |                     |
| <b>Thursday 25<sup>th</sup></b>  | <b>LLANDUDNO</b>                             | £21.00               | £17.00              |
| Take a stroll along the promenade, visit the pier or have a sit on the beach. There's plenty to see and do.  |  |                      |                     |
| <b>Sunday 28<sup>th</sup></b>  | <b>BARMOUTH</b>                              | £22.00               | £18.00              |
| A day out at this lovely seaside resort with beach, shops and land train running along the Promenade.  |  |                      |                     |
| <b>Tuesday 30<sup>th</sup></b>   | <b>CHESTER / CHESTER ZOO / CHESHIRE OAKS</b> | £16.00               | £12.00              |
| Take your pick - Chester, Chester Zoo (admission not included) or Cheshire Oaks. Same coach – just let us know which one you want to go to when booking.           |  |                      |                     |
| <b>Wednesday 31<sup>st</sup></b>   | <b>BURY MARKET</b>                           | £19.00               | £15.00              |
| This award winning market offers over 300 stalls with a wide selection of goods from food to crafts. Plenty of places to eat & drink when you're ready for a rest. |  |                      |                     |

**BOOKINGS TAKEN FROM 10.00am TO 4.00pm - MONDAY TO FRIDAY**  
**TELEPHONE 01543 372247 or visit us at our Brownhills Office**



Popular local pickups : Brownhills, Shelfield, Aldridge, Pelsall, Walsall, Lichfield, Cannock, Bloxwich, Heath Hayes, Willenhall & many more.





**Robinsons  
Coach Travel**  
*"The civilized way to travel"*

COPPICE ROAD, BROWNHILLS, WALSALL, WEST MIDLANDS WS8 7DG

Telephone: 01543 372247 Email: [info@robinsonstravels.com](mailto:info@robinsonstravels.com) [www.robinsoncoachtravel.co.uk](http://www.robinsoncoachtravel.co.uk)

## DAY TRIPS – AUGUST & SEPTEMBER 2019

### AUGUST

|   |                                   | Senior/Adults | Child (3-12) |
|---|-----------------------------------|---------------|--------------|
| <b>Friday 2<sup>nd</sup></b>  | <b>WESTON-SUPER-MARE</b>          | £21.00        | £17.00       |
| With Victorian & Edwardian terraces, colourful parks, long sandy beaches and famous Grand Pier, Weston-Super-Mare has plenty for all ages to enjoy.               |                                   |               |              |
| <b>Sunday 4<sup>th</sup></b>  | <b>BLACKPOOL</b>                  | £20.00        | £16.00       |
| With the Promenade, beach, Tower, trams, amusements & Pleasure Beach you'll find lots to do at this popular family resort.  |                                   |               |              |
| <b>Tuesday 6<sup>th</sup></b>   | <b>BARMOUTH</b>                   | £22.00        | £18.00       |
| A day out at this lovely seaside resort with beach, shops and land train running along the Promenade.   |                                   |               |              |
| <b>Thursday 8<sup>th</sup></b>  | <b>YORK</b>                       | £22.00        | £18.00       |
| A day out at this historic City, plenty of places to visit from York Minster, Jorvik Centre, York Dungeon or spend the day with the trains at the Railway Museum. |                                   |               |              |
| <b>Saturday 10<sup>th</sup></b>   | <b>LINCOLN 1940's CELEBRATION</b> | £21.00        | £17.00       |
| Lincoln's 1940s celebration includes many activities including living history displays, live music, vintage rides & markets.                                      |                                   |               |              |
| <b>Wednesday 14<sup>th</sup></b>  | <b>BRISTOL</b>                    | £22.00        | £18.00       |
| Famous for the Clifton Suspension Bridge, lots on offer from the Cathedral, Port & Harbour area, The SS Great Britain, Zoo, shopping quarter & outside Lido.      |                                   |               |              |
| <b>Saturday 17<sup>th</sup></b>   | <b>MORECAMBE</b>                  | £22.00        | £18.00       |
| Stroll along Morecambe's award winning promenade & the Eric Morecambe Statue, visit the gift shops or head on down to the beach for the day.                      |                                   |               |              |
| <b>Sunday 18<sup>th</sup></b>   | <b>WINDSOR</b>                    | £22.00        | £18.00       |
| Spend the day in beautiful Windsor, visit Windsor Castle or we can drop you off at the Legoland Resort (admissions to activities not included – coach fare only). |                                   |               |              |
| <b>Tuesday 20<sup>th</sup></b>  | <b>THE LAKE DISTRICT</b>          | £24.00        | £20.00       |
| Time to explore the shops in Ullswater and perhaps a bite to eat before we head off to Bowness-on-Windermere for the afternoon.                                   |                                   |               |              |
| <b>Thursday 22<sup>nd</sup></b>   | <b>LIVERPOOL</b>                  | £19.00        | £15.00       |
| Famous for the home of The Beatles enjoy a day out in Liverpool with Albert Dock, shops, museums and galleries to explore.  |                                   |               |              |
| <b>Saturday 24<sup>th</sup></b>   | <b>SKEGNESS</b>                   | £22.00        | £18.00       |
| With miles of sandy beaches and plenty of attractions for all ages, giving a great day out for all.   |                                   |               |              |
| <b>Tuesday 27<sup>th</sup></b>  | <b>LLANDUDNO</b>                  | £21.00        | £17.00       |
| Take a stroll along the promenade, visit the pier or have a sit on the beach. There's plenty to see and do.   |                                   |               |              |
| <b>Thursday 29<sup>th</sup></b>   | <b>SOUTHPORT</b>                  | £20.00        | £16.00       |
| Home to the UK's oldest iron pier with traditional seaside amusements in the Pavilion, long beaches and amusements there's lot for all the family to enjoy.       |                                   |               |              |

### SEPTEMBER

|   |  | Senior/Adults | Child (3-12) |
|---|--|---------------|--------------|
| <b>Wednesday 4<sup>th</sup></b>   | <b>BURY MARKET</b>                                 | £19.00        | £15.00       |
| This award winning market offers over 300 stalls with a wide selection of goods from food to crafts. Plenty of places to eat & drink when you're ready for a rest.  |  |               |              |
| <b>Tuesday 10<sup>th</sup></b>  | <b>COTSWOLDS</b>                                   | £16.00        | £12.00       |
| A popular day out – first we are off for a visit to Moreton-in-Marsh on market day then back on the coach to enjoy the afternoon in Bourton-on-the-Water.   |  |               |              |
| <b>Thursday 12<sup>th</sup></b>   | <b>ELY &amp; CAMBRIDGE</b>                         | £20.00        | £16.00       |
| A morning in Ely, home to one of England's largest Cathedrals. Then to Cambridge to be inspired by the many museums, art galleries, college buildings,  |  |               |              |
| <b>Monday 16<sup>th</sup></b>   | <b>TRENTHAM GARDENS</b>                            | £24.00        | £20.00       |
| Trentham Gardens has plenty to offer, price includes entry to the glorious Italian and Show Gardens, Lakeside Walk, shopping village, garden centre and eateries.   |  |               |              |
| <b>Thursday 19<sup>th</sup></b>   | <b>NATIONAL MEMORIAL ARBORETUM &amp; CREAM TEA</b> | £24.00        | £20.00       |
| The UK's year-round centre of Remembrance. 150 acres of beautiful woodland & gardens, exhibitions and over 300 unique memorials to see. Cream tea with freshly baked scones, jam & clotted cream to enjoy in the Arboretum restaurant is included in the price. |  |               |              |
| <b>Tuesday 24<sup>th</sup></b>  | <b>OXFORD</b>                                      | £19.00        | £15.00       |
| Spend the day in the historic city of Oxford, with stunning architecture, shops, Castle and many museums.   |  |               |              |
| <b>Thursday 26<sup>th</sup></b>   | <b>YORK FOOD FESTIVAL</b>                          | £22.00        | £18.00       |
| Enjoy the tastes and smells of the famous York Food Festival. Take a stroll along the shops in the Shambles, visit York Minster or National Railway Museum.   |  |               |              |

#### SUNDAY 22<sup>nd</sup> SEPTEMBER EMMERDALE STUDIO TOUR EXPERIENCE £43.00 per person

Price includes admission to Studio Tour & Coach Travel

£10.00 non-refundable deposit per person secures your booking

The Emmerdale Studio Experience is now open at the former ITV studios in Leeds. The fully guided tour shows how your favourite characters and stories are brought to life. You'll get to see full scale set reconstructions, props, and costumes. Learn the secrets behind stunts and special effects of this iconic programme. Take your memories home with a souvenir photo from behind the Woolpack bar to buy or exclusive Emmerdale merchandise from the gift shop. LIMITED AVAILABILITY – EARLY BOOKING ADVISED.

#### SUNDAY 29<sup>th</sup> SEPTEMBER CORONATION STREET STUDIO TOUR £56.00 per person

Price includes admission to Studio Tour & Coach Travel

£10.00 non-refundable deposit per person secures your booking

Coronation Street has opened its doors to its newly created set located at Media City Salford Quays. Wander through Rosamund & Victoria Street, Weatherfield on a fully guided tour of the working set. Recall stories from yesteryear, hear filming secrets, take selfies on the cobbles and follow in the footsteps of your favourite characters. Free time in Salford Quays before our afternoon tour. LIMITED AVAILABILITY – EARLY BOOKING ADVISED.

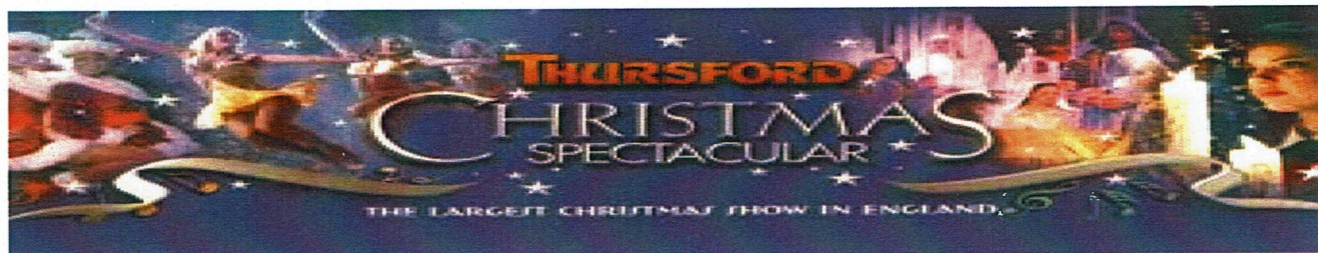
**BOOKINGS TAKEN FROM 10.00am TO 4.00pm - MONDAY TO FRIDAY**  
**TELEPHONE 01543 372247 or visit us at our Brownhills Office**



**Robinsons  
Coach Travel**  
*"The civilized way to travel"*

**COPPICE ROAD, BROWNHILLS, WALSALL, WEST MIDLANDS WS8 7DG**

Telephone: 01543 372247 Email: [info@robinsonstravels.com](mailto:info@robinsonstravels.com) [www.robinsonscorchtravel.co.uk](http://www.robinsonscorchtravel.co.uk)



## **THURSFORD CHRISTMAS SPECTACULAR DAY TRIP**

**SUNDAY 24<sup>TH</sup> NOVEMBER - £75.00 PER PERSON**

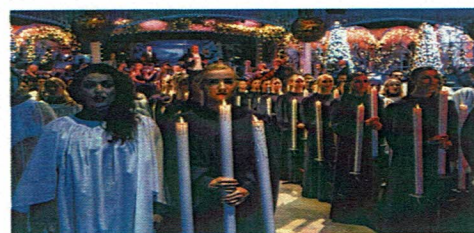
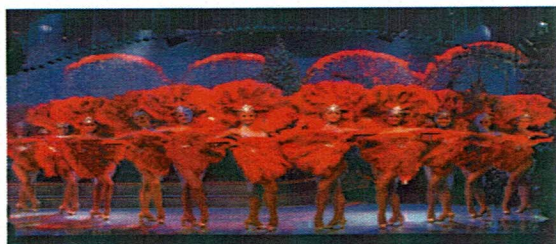
*TICKETS FOR 2.00PM PERFORMANCE - LIMITED AVAILABILITY  
£15.00 DEPOSIT (non-refundable) PER PERSON SECURES YOUR PLACE*



*An extravaganza of non-stop singing, dancing, music, humour and variety.  
It's a fast moving celebration of the festive season featuring both seasonal  
and year round favourites.*

Set in the magical surroundings of mechanical organs and fairground carousels, with a cast of 120 professional singers, dancers and musicians – most of whom are straight out the West End.

The three hour performance delivers an extravaganza of non-stop singing, dancing, music, humour and variety. It's a fast moving celebration of the festive season featuring an eclectic mix of both seasonal and year-round favourites, with famous and much-loved chart toppers being performed alongside traditional carols.



**BOOKINGS TAKEN FROM 10.00am TO 4.00pm - MONDAY TO FRIDAY  
TELEPHONE 01543 372247 or visit us at our Brownhills Office**

Popular local pickups : Brownhills, Shelfield, Aldridge, Pelsall, Walsall, Lichfield, Cannock, Bloxwich, Heath Hayes, Willenhall & many more.