

Now You've Settled in...

Planning for a brighter future for yourself and your family is something we take pride in being involved in. As you've just been dealing with our conveyancers, we thought now would be a good time to remind you it may be time to update your Will.

What's included?

- **Clear Price Guidelines** - our prices will be clear to you right from the beginning. We offer Fixed Fees for our services.
- **Your Own Solicitor** - You will not be passed around a team- established in 1773 we are a local firm, looking after the needs and wishes of local people
- **Client Car Parking**
- **Saturday Morning Opening**
- **Disabled Access and Home Visits (By Arrangement)**

Meet Our Specialist Wills & Probate Lawyers



Louise
McKay
Solicitor &
Partner

01273 327272



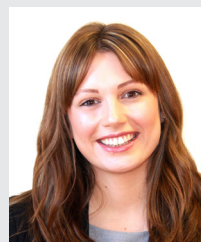
John
Brewins
Solicitor

01273 327272



Sue
Brakell
Solicitor

01273 592624



Carla
Campbell
Trainee Legal
Executive

01273 592624



Joanna
Dixon
Probate
Executive

01273 327272

It's something we all brush under the carpet, but it's very important to think about your future planning.

Please call/email for further information on any of the above points or to book yourself an appointment with us at either our Southwick or Brighton office.



QualitySolicitors
Howlett Clarke

Changing the way you see lawyers.



www.qualitysolicitors.com/howlettclarke



info@howlettclarke.co.uk

Our Private Client Services:

- Making a Will
- Tax Planning
- Powers of Attorney
- Estate Administration
- Court of Protection Deputyship
- Inheritance Planning
- Probate Matters

Our Further Services:

- Civil Litigation
- Consumer Credit
- Divorce/Separation
- Family/Children
- Landlord & Tenant
- Mediation/Dispute Resolution
- Personal Injury
- Professional Negligence

We are also about to provide advice for contesting a Will or making an Inheritance Act claim, call our Brighton office on 01273 327272.

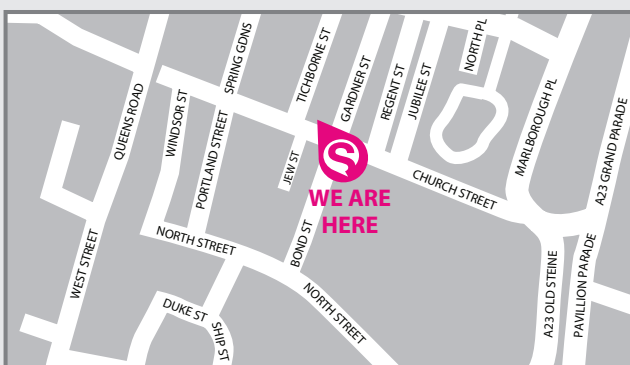
How to find us

By Bus from Brighton>Southwick:

Catch the 700 from Churchill Sq, Brighton along the coast to Southwick (around every 10 mins)

Catch the 46 from Churchill Sq (Stop C) to Southwick Square (around every 45 mins).

Brighton Office (As of 31st May 2016)

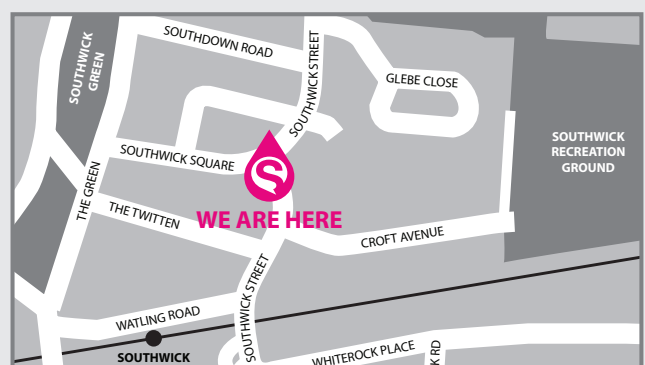


96 Church Street, Brighton BN1 1UJ
01273 327272

By Train from Brighton>Southwick:

Catch the Southern Train towards West Worthing, the journey takes around 10 minutes (trains are every 15-20mins)

Southwick Office



Bank House, Southwick Square, Southwick BN42 4EY
01273 592624



QualitySolicitors
Howlett Clarke